

## Health GeoJunction

**An interactive web portal for tracking the science and public health indicators of infectious disease threats**

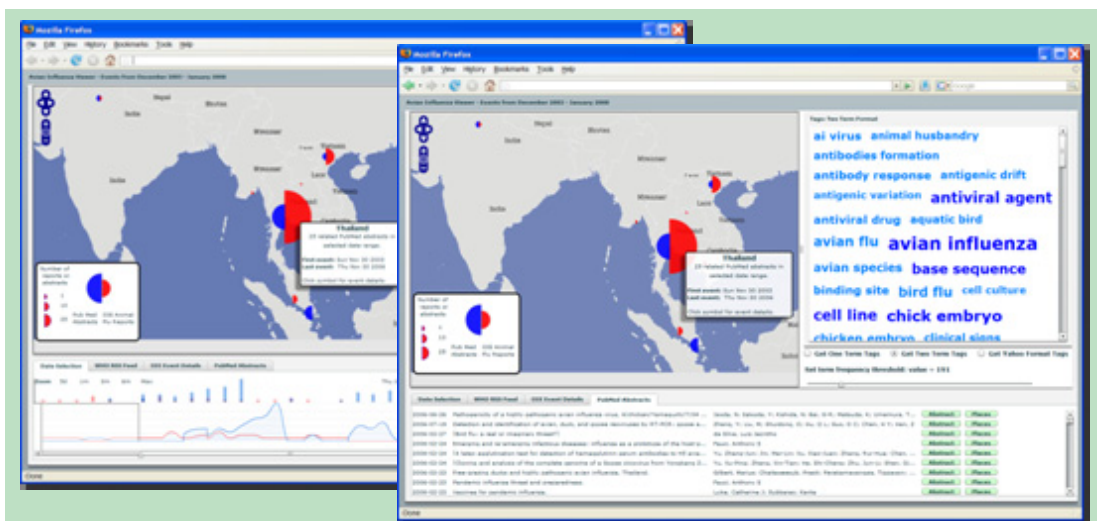
**A case study of an Avian Flu/H5N1 portal**

**Benefit:** *The Health GeoJunction is a visual analytic web portal that both maps information extracted from scientific literature, public health reports and event data and supports identification of cross-connections among extracted information fragments. It allows analysts to quickly build a geographically-grounded understanding of the current science and public health policy related to distributed public health threats and events.*

The influenza pandemic of 1918-19 was responsible for an estimated 50 million deaths. This historic example indicates the potential global health consequences of a major infectious disease outbreak. Recent human cases of Avian Influenza A (H5N1) and resulting deaths highlight the need to enhance global surveillance and response capabilities. Understanding the science of potential human-to-human H5N1 transmission and tracking global indicators of the evolution of this threat requires integration and geographical contextualization of information from multiple documents found at multiple locations.

The Health GeoJunction supports: (1) knowledge acquisition and situation assessment based upon the current and evolving state of science and public health policy related to infectious disease threats (e.g., avian flu pandemic threat); (2) situation awareness – for an analyst with epidemiological expertise – by supporting geographically and temporally grounded cross-indexing of evidence in scientific publications, public health reports, and event data through a flexible, visual interface; and (3) characterizing the social network of domain researchers by topical coverage, geographic focus, and research facility locations.

Health GeoJunction implements Open GIS Consortium (OGC) compliant web services to process text from scientific and public health documents so that a user can gain an understanding of the geographic context of relevant public health information through interactive map-based visualizations. Specifically, text processing algorithms identify and disambiguate geographic names and provide the geographic coordinates for each place mentioned. Additional computational methods identify keywords, authors and dates for cross-referencing documents. The web interface provides maps, time series plots, and concept views for exploring document collections and their properties.



**Health GeoJunction exploration of recent Avian Flu incidents & publications:** Background shows incidents (blue) and publications (red) on map and timeline. Foreground shows a 2-word tag cloud for relevant documents (upper right) and publications about avian flu in Thailand (bottom).

**Funded by:** *The National Science Foundation and the Department of Homeland Security*

Early Development

Lab Prototype

Commercial Product

Jan 2009

**For more information, contact:**

Alan MacEachren, (814) 865-7491, maceachren@psu.edu

www.geovista.psu.edu/NEVAC